

Pot/Holding Magnets

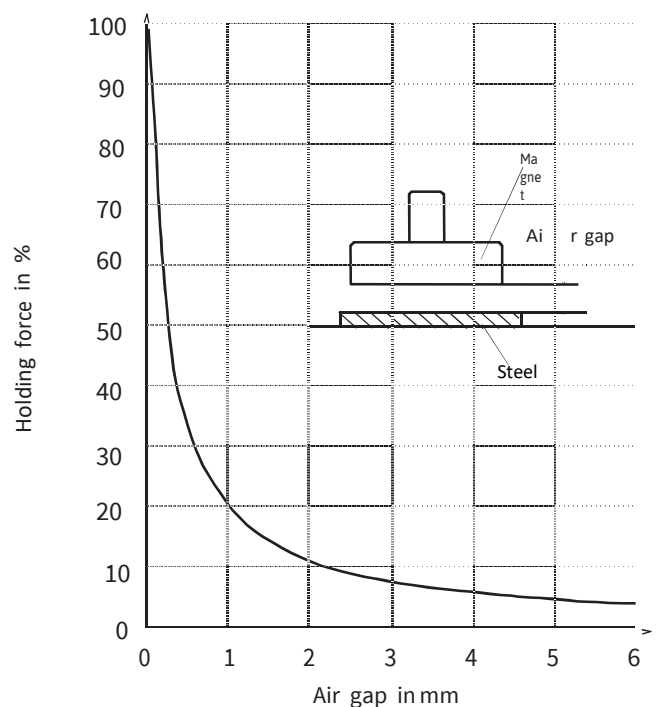
Powerful holding force with permanent magnets

Sura Pot magnets are widely used for many different applications in all types of industry all over the world. Major advantages are as the magnetic field is restricted to the pole surface, the holding force is very high compared to a single magnet and there is no magnetic field on the other side that creates undesirable magnetic influences to surrounding areas. These characteristics create unlimited usability for Pot magnets virtually anywhere.



Depending on the magnetic material, design and required working temperature the different pot magnets are a versatile and reliable trouble free product used for applications such as securing work pieces for welding, cutting drilling etc, and holding or handling inspection equipment, gauges, lamps, doors, antennas and many more. It's only the imagination that sets the limit for the use of Pot magnets.

The specified holding force applies when using them without any air gap and on clean metal surface. The air gap between the pot and surface (see graph), roughness and contamination has negative impact on the holding force. High temperature also decreases the holding force temporary, but is restored when the temperature drops to normal again. Therefore it is important that you choose the pot for your application with these considerations.

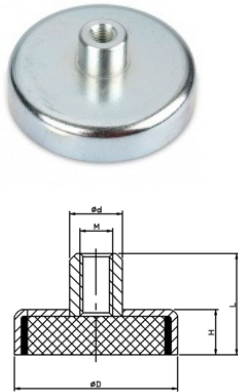


Pot/Holding Magnets

Ferrite

Ferrite with bush and internal thread

Galvanized steel housing
max operating temperature 80°C

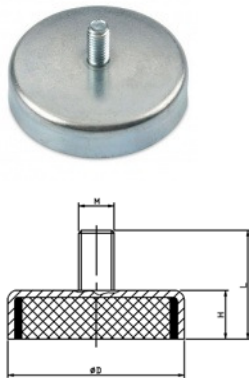


Part-No.	Dimensions (mm)					Forc N	Weight g
	D	H	L	d	M		
M S-K-10A	10	4,5	11	6	3	4	3
M S-K-13A	13	4,5	11,5	6	3	10	5
M S-K-16A	16	4,5	11,5	6	3	18	6
M S-K-20A	20	6	13	6	3	30	11
M S-K-25A	25	7	15,5	8	4	40	22
M S-K-32A	32	7	16	8	4	80	32
M S-K-36A	36	7,7	16	8	4	100	45
M S-K-40A	40	8	18	10	5	125	60
M S-K-47A	47	9	17,5	8	4	180	90
M S-K-50A	50	10	22	12	6	220	110
M S-K-57A	57	10,5	19	8	4	280	145
M S-K-63A	63	14	30	15	8	350	240
M S-K-80A	80	18	34	20	10	600	520
M S-K-85A*	85	18	34	20	10	500	530
M S-K-90A	90	13	34	20	10	600	570
M S-K-100A	10	22	43	22	12	900	940

* with stainless steel cover plate
other dimensions on request

Ferrite with neck and external thread

Galvanized steel housing
max operating temperature 80°C

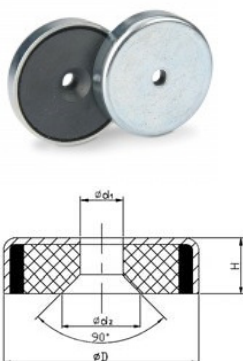


Part-No.	Dimensions (mm)				Force N	Weight g
	D	H	L	M		
M S-K-10AG	10	4,0	11,5	3	4	3
M S-K-13AG	13	4,5	11,5	3	10	5
M S-K-16AG	16	4,5	11,5	3	18	6
M S-K-20AG	20	6,0	13	3	30	11
M S-K-25AG	25	7,0	15	4	40	22
M S-K-32AG	32	7,0	15	4	80	32
M S-K-47AG	47	9,0	17	6	180	90
M S-K-57AG	57	10,5	15,5	6	280	142
M S-K-63AG	63	14,5	29	6	350	335

other dimensions on request

Ferrite with through hole and countersunk 90°

Galvanized steel housing
max operating temperature 80°C

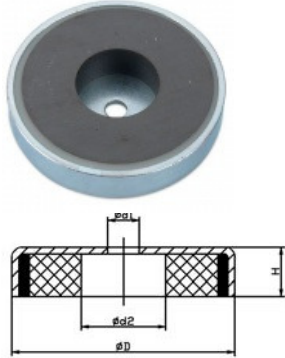


Part-No.	Dimensions (mm)				Force N	Weight g
	D	H	d ₁	d ₂		
M S-K-16C	16	4,0	3,5	6,5	14	4
M S-K-20C	20	6	4,2	8,6	27	9
M S-K-25C	25	7	5,5	10,4	36	16
M S-K-32C	32	7	5,5	10,4	72	27
M S-K-40C	40	8	5,5	10,4	90	53

other dimensions on request

Ferrite with through hole and straight countersunk

Galvanized steel housing
max operating temperature 80°C

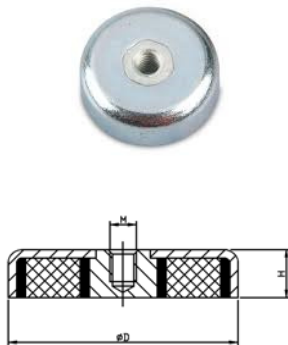


Part-No.	Dimensions (mm)				Force	Weight
	D	H	d1	d2	N	g
M S-K-50C	50	10,5	8,5	22	180	90
M S-K-63C	63	14	6,2	24	290	195
M S-K-80C	80	18	6,5	11,5	600	480

other dimensions on request

Ferrite with internal thread (not through)

Galvanized steel housing
max operating temperature 80°C

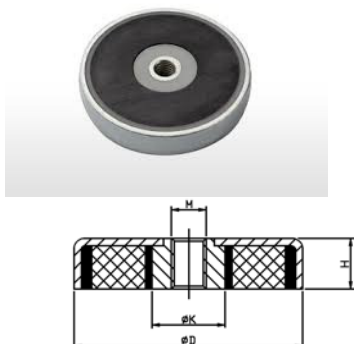


Part-No.	Dimensions (mm)			For	Weig
	D	H	M	N	g
M S-K-85C	85	18	10	54	540
M S-K-105C	10	20	10	78	960

other dimensions on request

Ferrite with internal thread (through)

Galvanized steel housing
max operating temperature 80°C



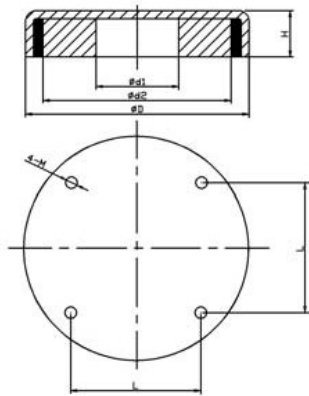
Part-No.	Dimensions (mm)				Force	Weigh
	D	H	K	M	N	g
M S-K-50AC	50	10	18	6	170	105
M S-K-63AC	63	14	20	8	350	235
M S-K-80AC	80	18	15	10	550	490

other dimensions on request

Ferrite

Ferrite with 4-assembly threaded holes

Galvanized steel housing
max operating temperature 80°C

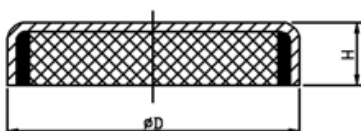


Part-No.	Dimensions (mm)						Force	Weigh
	D	H	d1	d2	M	L	N	g
MS-K-86C/4	86	18	75	32	4	50	540	510
M S-K-105C/4	105	20	90	36	4	50	760	690

other dimensions on request

Ferrite flat with solid magnet

Galvanized steel housing
max operating temperature 80°C



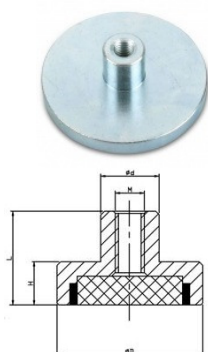
Part-No.	Dimensions		For	Weight
	D	H	N	g
M S-K-10F	10	4,5	4	2
M S-K-13F	13	4,5	10	3
M S-K-16F	16	4,5	18	4,5
M S-K-20F	20	6	30	10
M S-K-25F	25	7	40	19
M S-K-32F	32	7	80	30
M S-K-36F	36	7,7	10	40
M S-K-40F	40	8	12	55
M S-K-47F	47	9	18	80
MS-K50F	50	10	22	100
M S-K-57F	57	10,	28	140
M S-K-63F	63	14	35	230
M S-K-80F	80	18	60	485
M S-K-100F	10	22	90	900

other dimensions on request

NdFeB

NdFeB with bush and internal thread

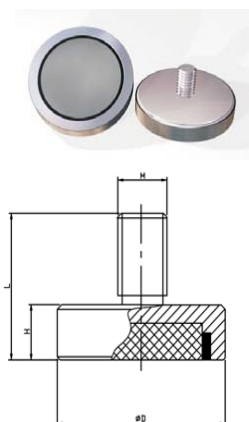
Galvanized steel housing
max operating temperature 90°C



Part-No.	Dimensions (mm)					Force N	Weight g
	D	H	L	d	M		
MS-K-6NDA	6	4,5	11,5	6	3	5	1,5
MS-K-8NDA	8	4,5	11,5	6	3	13	2
MS-K-10NDA	10	4,5	11,5	6	3	25	3
MS-K-13NDA	13	4,5	11,5	6	3	60	5
MS-K-16NDA	16	4,5	11,5	8	4	95	7,5
MS-K-20NDA	20	6	13	8	4	140	16
MS-K-25NDA	25	7	14	8	4	200	25
MS-K-32NDA	32	7	15,5	1	5	350	48

NdFeB with neck and external thread

Galvanized steel housing
max operating temperature: 90°C

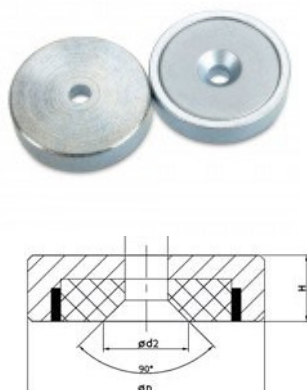


Part-No.	Dimensions (mm)				Force N	Weight g
	D	H	L	M		
MS-K-10NDAG	10	4,5	11,5	3	25	2,5
MS-K-13NDAG	13	4,5	12,5	5	60	5
MS-K-16NDAG	16	4,5	12,5	6	95	8
MS-K-20NDAG	20	6	16	6	140	15
MS-K-25NDAG	25	7	17	6	200	27
MS-K-32NDAG	32	7	17	6	350	42

other dimensions on request

NdFeB with through hole and countersunk 90°

Galvanized steel housing
max operating temperature 90°C, 180°C versions



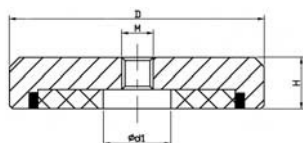
Part-No.	Dimensions (mm)				Force N	Weight g
	D	H	d1	d2		
MS-K-16NDC	16	4,5	3,5	6,6	75	6
MS-K-20NDC	20	6	4,5	9	105	13
MS-K-25NDC	25	7	4,5	9	160	24
MS-K-32NDC	32	7	5,5	11	310	39
MS-K-40NDC	40	8	5,5	10,6	500	73

other dimensions on request

NdFeB

NdFeB with internal thread, through hole and straight countersunk

Galvanized steel housing
max operating temperature: 90°C, 180°C versions

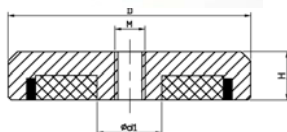


Part-No.	Dimensions (mm)				Force N	Weight g
	D	H	d1	M		
MS-K-32NDB	32	7	5,5	5	330	40
MS-K-40NDB	40	8	10,5	5	500	74
MS-K-50NDB	50	10	9,5	8	800	140
MS-K-63NDB	63	14	11,7	10	1100	315
MS-K-75NDB	75	15	13	10	1750	479

other dimensions on request

NdFeB with internal thread and through hole

Neodymium magnet in a galvanized steel housing
max operating temperature: 90°C, 180°C versions

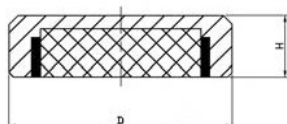
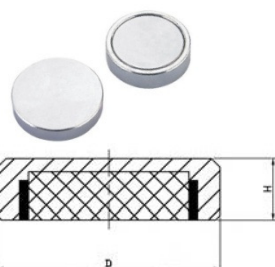


Part-No.	Dimensions (mm)				Force N	Weight g
	D	H	d1	M		
MS-K-25NDAC	25	7	10	6	140	25
MS-K-32NDAC	32	7	10	5	300	42
MS-K-40NDAC	40	8	10	5	450	77
MS-K-50NDAC	50	10	14	8	740	143
MS-K-60NDAC	60	14	16	10	1000	300
MS-K-68NDAC	68	16	16	10	2000	435
MS-K-80NDAC	80	16	16	10	2500	600

other dimensions on request

NdFeB flat with solid magnet

Neodymium magnet in a galvanized steel housing
max operating temperature: 90°C, 180°C



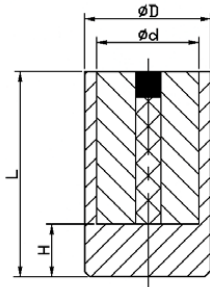
Part-No.	Dimensions		Force N	Weight g
	D	H		
MS-K-6NDF	6	4,5	5	1
MS-K-8NDF	8	4,5	13	1,5
MS-K-10NDF	10	4,5	25	2,5
MS-K-13NDF	13	4,5	60	4,5
MS-K-16NDF	16	4,5	95	6,5
MS-K-20NDF	20	6	140	15
MS-K-25NDF	25	7	200	22
MS-K-32NDF	32	7	350	40

other dimensions on request

NdFeB

NdFeB Cylindrical 2-Pole

Neodymium magnet in a galvanized steel housing max operating temperature: 90°C, 180C°

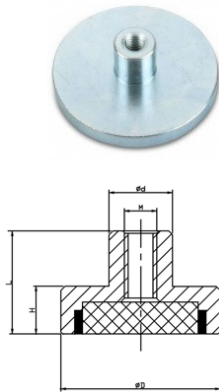


Part-No.	Dimensions (mm)				For	Weight
	D	L	H	d	N	g
MS-K-6N DE	6	20	10	4	10	4,5
MS-K-8N DE	8	20	10	6	25	8
MS-K-10N DE	10	20	8	8	45	12,5
MS-K-13N DE	13	20	8	10	70	20
MS-K-16N DE	16	20	2	13	15	32
MS-K-20N DE	20	25	6	17	28	60
MS-K-25N DE	25	35	7	22	45	135
MS-K-32N DE	32	40	5	28	70	250

SmCo

SmCo with bush and internal thread

Galvanized steel housing
max operating temperature 90°C

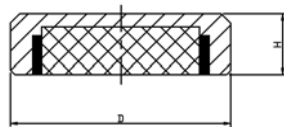


Produkt-No.	Dimensions (mm)					Force	Weight
	D	H	L	d	M	N	g
M S-K-6SAA	6	4,5	11,5	6	3	5	1,5
M S-K-8SAA	8	4,5	11,5	6	3	13	2
M S-K-10SAA	10	4,5	11,5	6	3	25	3
M S-K-13SAA	13	4,5	11,5	6	3	60	5
M S-K-16SAA	16	4,5	11,5	8	4	95	7,5
M S-K-20SAA	20	6	13	8	4	140	16
M S-K-25SAA	25	7	14	8	4	200	25
M S-K-32SAA	32	7	15,5	10	5	350	48

Other dimensions on request

SmCo flat with solid magnet

Galvanized steel housing
max operating temperature: 180°C



Produkt-No.	Dimensions		Force	Weight
	D	H	N	g
M S-K-6SAF	6	4,5	5	1
M S-K-8SAF	8	4,5	13	1,5
M S-K-10SAF	10	4,5	25	2,5
M S-K-13SAF	13	4,5	60	4,5
M S-K-16SAF	16	4,5	95	6,5
M S-K-20SAF	20	6	140	15
M S-K-25SAF	25	7	200	22
M S-K-32SAF	32	7	350	40

Other versions on request

